

Product Data

**RawCN Raw**

# Processing Machine

HUADA Pharma international Co., Ltd





## Raw**CN** Raw Processing Machine

Product Data

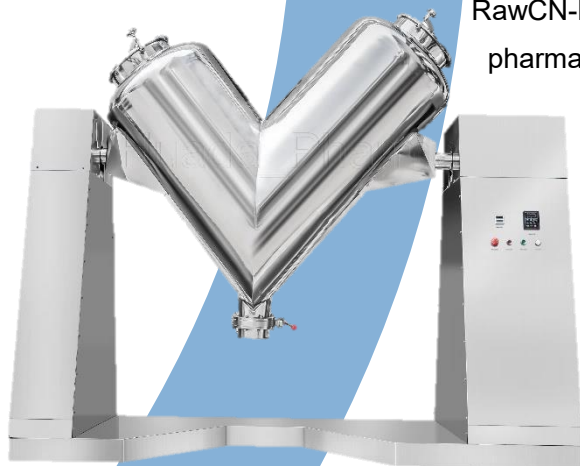
# Contents

---

---

Raw <b>CN</b> -Mix V500-4000	Powder Blending Machine
V50 Pro	Powder Blending Machine
Raw <b>CN</b> -Mix D100-600	Powder Blending Machine
YK Series	Vibrating Granulator
W300-2000	Double Cone Mixer
Raw <b>CN</b> -Gra D10/100	Dry Granulator Machine
CH100 - CH500	Powder Blending Machine
XZS-800	Powder Sifter Machine
WLDH1000-4000	Powder Mixer Ribbon Mixer
SF-D	Continuous Mill Herb Grinder
WFJ-15	Superfine Grinder
SF	Continuous Mill Herb Grinder

# RawCN-Mix V500-4000 Powder Blending Machine



RawCN-Mix V type dry powder mixer blending machine is suitable for use in the pharmaceuticals, chemical and food industries for mixing powder or granular materials. The cylindrical structure is the distinguishing feature and the mixing ability is well-proportioned and efficient with no blind spots in the cylinders and no accumulation of materials.

RawCN-Mix V type dry powder mixer machine is straightforward and it is easy to operate with the surface that is easy to clean in a highly finished stainless steel.

## Features

- Place the machine on a flat and sturdy surface so it will run

smoothly and efficiently.

- Before use, check the gear reducer to ensure there has enough oil.
- Run an empty load. Check carefully to make sure the machine is under good condition.
- The materials should not exceed 40% of the cylinder's limit.
- It is necessary to clean the hopper completely when changing materials or when finishing a run.



## Technical Parameters

Model	Mix V500	Mix V1000	Mix V1500	Mix V2000	Mix V2500	Mix V4000
Volume(L)	500	1000	1500	2000	2500	4000
Max. Filling Capacity(L)	200	400	600	800	1000	1600
Best Filling Capacity(L)	100	200	300	400	500	800
Power(KW)	1.5	3	4	5.5	7.5	11
Rotational Speed(r/min)	12	12	10	10	10	10
Dimensions(mm)	2500x1220x2720	2975x1600x3000	3190x1900x3100	3800x1900x3310	3990x1990x3790	4945x2200x4230
cGMP	✓	✓	✓	✓	✓	✓
CE	✓	✓	✓	✓	✓	✓
ISO9001	✓	✓	✓	✓	✓	✓

✓: Yes    Ⓞ: Optional

# V50 Pro Dry Powder Mixer Blending Machine



Dry Powder Mixer Blending Machine Mixer V50 Pro (with protective fences) is a mixing machine from CapsulCN. It is suitable for mixing various dry powder and granular materials in pharmaceutical, chemical and food industries. The mixer has characteristics of simple structure, easy operation and pretty appearance. Its parts in contact with materials are made of stainless steel, which conforms to the CGMP.

## Features

- Simple operation, smooth running, no noise.
- It can adapt to the mixing of various materials, and the uniformity rate can reach 98%.
- When mixing materials with frictional properties, or when mixing materials with good fluidity, the mixing effect of the V-type mixer is better.
- The machine is equipped with universal casters, which is convenient for customers to adjust the position of the equipment according to the situation of the factory.
- There are safety fences to ensure the safety of the production process.
- Place the machine on a flat and sturdy surface so it will run smoothly and efficiently.



## Technical Parameters

Model	V50 Pro
Volume(L)	50
Max. Filling Capacity(L)	20
Best Filling Capacity(L)	16
Motor Power(KW)	0.75
Rotational Speed(r/min)	36
Dia. Of Inlet	150mm
Dia. Of Outlet	80mm
Machine dimension	1320x1120x1100(mm)
Machine weight	About 200 kg
Operation dimension	Φ 950* 1295 mm
Packing dimension	1480*1280*1360(mm)
Packing weight	210 kg

# RawCN-Mix D100-600 Powder Blending Machine



The RawCN-Mix D series mixer is widely used in pharmacy, chemical industry, food industry, scientific research, etc. It is suitable for mixing dry-powder or granular materials with good flowing properties.

As the mixing vat is able to make multidirectional motion, it makes raw materials inside the vat has many cross-mixing points, therefore the mixing effect is better. Its degree of uniformity can achieve above 99.9%.

The max. loading efficiency can be 0.9 ( The loading efficiency of ordinary mixer is 0.4-0.6). The mixing time is short and efficiency is high. The material are mixed in an enclosed state with no contamination to the working environment and materials.



## Features

- It will be better to install the machine under the guidance of a trained staff.
- The lubricant oil should be changed every three months.

## Technical Parameters

Model	Mix D100	Mix D200	Mix D300	Mix D400	Mix D600
Vat volume(L)	100	200	300	400	600
Max. Filling volume(L)	80	160	240	320	480
Best Filling volume(L)	50	100	150	200	300
Rotational speed(r/min)	0-20	0-16	0-16	0-16	0-12
Power(KW)	1.5	2.2	3	4	5.5
Weight (kg)	500	800	1000	1200	1500
Dimensions(m)	600×1800×150	1400×2000×16	1600×2100×17	1700×2300×180	1850×2500×190
cGMP	✓	✓	✓	✓	✓
CE	✓	✓	✓	✓	✓
ISO9001	✓	✓	✓	✓	✓

✓: Yes ☉: Optional

# YK Series Vibrating Granulator



This machine is used mainly in such trades as pharmacy, chemical industry, food, pottery and plastics extensively, making moist powder material particle. Make cylinder swing reciprocally, extruding material from screen mesh for granulation. It also can be used for crushing the agglomerate materials into small granules directly.

It is very suitable for material of high viscosity.

## Features

- It can be used for crushing the agglomerate materials into small granules directly.
- It is very suitable for material of high viscosity.



## Technical Parameters

Model	YK60	YK90	YK160
Capacity	20~30kg/h	50~100kg/h	200~300kg/h
Cycle Times	46 time/min	50 time/min	55 time/min
Feed Port	209*212mm	300*280mm	408*380mm
Motor	0.55kw	0.75kw	2.2kw
Dia. Of Barrel	60mm	90mm	160mm
Rang of Wave	> 360°	> 360°	> 360°
Dimensions	460x550x570mm	460x750x840mm	950x560x1240mm
Weight	55kg	150kg	360kg



# Double Cone Mixer

The double cone mixer is a kind of equipment for mixing dry powder or dry granular materials, which is suitable for pharmaceutical industry, chemical industry, food, agriculture and other industries.



The double cone mixer has a unique structure design. The mixing container rotates. During this process, the materials in the container move in all directions, which makes the materials in the container be mixed more, with good effect and high mixing uniformity. The maximum load coefficient is 0.7.

The rotation axis of the double cone mixer deviates an angle from the center of the mixing container during mixing. When the container rotates, the material diffuses, flows and moves tangentially. In this way, under the action of frequent and rapid rotation and turning, the mixed materials are mixed with each other, which ensures that the

materials can meet the ideal mixing requirements in a short time.

## Features

- The double cone mixer has a unique structure design. The mixing container rotates.
- During this process, the materials in the container move in all directions, which makes the materials in the container be mixed more, with good effect and high mixing uniformity.
- The maximum load coefficient is 0.7.



## Technical Parameters

Model	W-300	W-500	W-1000	W-2000
Volume	300L	500L	1000L	2000L
Mixing speed	3-12Rpm/min			
Maximum mixing amount	150kg	250kg	500kg	1000kg
Weight	500kg	800kg	1200kg	2000kg
Total power	2.2KW	3KW	4KW	7.5KW
Dimensions	1685×900×1300mm	1910×1220×1950mm	2765×1650×2200mm	3100×1900×2550mm



# RawCN-Gra D10/100 Dry Granulator Machine



Dry granulators are used for dry granulation process. The dry granulation process is used to form granules without using a liquid solution because the product to be granulated may be sensitive to moisture and heat. Forming granules without moisture requires compacting and densifying the powders. In this process, the primary powder particles are aggregated under high pressure.

The roller compactor (granulator-compactor) uses an auger-feed system that will consistently deliver powder uniformly between two pressure rollers. The powders are compacted into a ribbon or small pellets between these rollers and milled through a low-shear mill. When the product is compacted properly, then it can be passed through a mill and final blend before tablet compression.

## Features

- Dry granulators eliminate the addition of moisture and heat.
- The roller compactor is suitable for hard continuous operation as well as batch production.
- Low running cost/low operating cost and highly efficient process.
- It requires minimal floor space.



## Technical Parameters

Model	Gra D10	Gra D100
Capacity (kg/h)	1-10	50-100
Granularity (mm)	0.2-2	0.2-2
Roller Size (mm)	φ100*35	φ180*60
Maximal Pressure Force (Bar)	120	120
Screw Feeder Rotating Speed (Rpm)	10-60	20-120
Maximal Granulating Rotating Speed (Rpm)	200	200
Maximal Roller Speed (Rpm)	10	16
Power (KW)	3	8
Weight (KG)	350	1500
Dimensions L*W*H (mm)	760 x 800 x 1650	1500 x 1100 x 1980
cGMP	✓	✓
CE	✓	✓
ISO9001	✓	✓

✓: Yes    Ⓞ: Optional

# CH100 - CH500 Big Volume Powder Mixer Blender

This machine is mainly used in the pharma industry for mixing dry or wet powdered materials. This machine is also used in chemical and food industries. It does not dissolve materials, volatile or deteriorate when mixing. It is especially suitable for small

batch of testing, not entirely suitable for mixing semi solid or sticky materials of mass batch.

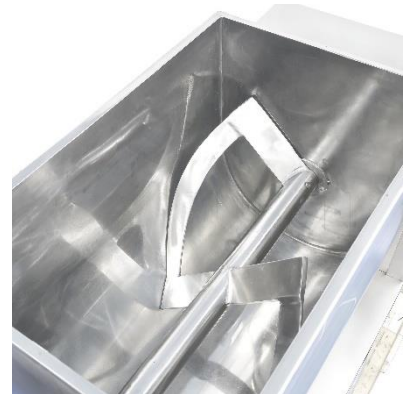
## Features

- The machine is fully integrated and flexible.
- The stainless steel vessel is non- corrosive and allows dense liquids to turn freely and mix thoroughly without fading.
- The rotation system adopts worm-gear drive with good lubrication oil, which improves shelf life of the machine

- Materials are poured manually.
- Operator- friendly.

## Technical Parameters

Model	CH-100	CH-150	CH-200	CH-300	CH-400
Volume	100L	150L	200L	300L	400L
Power(KW)	2.2	3	4	5.5	5.5
Rotational Speed	24 r/min	24 r/min	24 r/min	24 r/min	24 r/min
Pouring Motor Power(KW)	0.75	0.75	0.75	1.1	1.1
Tilting Angle	115°	115°	115°	115°	115°
Dimensions (mm)	1100x440x900	1280x600x1100	1400x600x1200	1850x700x1200	2100x750x1250
Weight (KGS)	350	410	450	520	580



# XZS-800 Powder Sifter Machine



Rotary sieve machine, often called rotary sifting machine, is a new high precision fine powder screening machine. It uses vertical vibration motor as excitation source. This motor is equipped on both sides with an eccentric hammer which functions to transfer the rotation movement of motor to horizontal, vertical and inclined motions. And the hammer then delivers the motions to screen surface for sifting. At present, rotary sieve machine is widely applied in pharmaceutical, foodstuff and other industries.

Rotary sieve machine is suitable for many industries.

## Features

- Rotary sieve machine has features of high efficiency, simple operation and small size.
- With high screening precision, it is suitable for all kinds of powdery and mucus materials.
- This rotary sifting machine is removable and only takes 3 to 5 minutes to change a net.
- Its screen is not blocked and produces little scattering dust. It can sieve 0 to 400 meshes of materials.
- Rotary sieve machine is well-designed and durable, which can work continuously.
- During the sieving process, coarse materials and impurities can be discharged automatically.
- The discharging direction can be adjusted along the circumferential direction.
- Rotary sifting machine can sieve materials on different layers (not more than 5) at the same time.



## Technical Parameters

Model	XZS-800
Nominal diameter	Φ800
Effective screen diameter	Φ750
No. of Plies	3
Vibration Motor	0.75
Maximum feed granularity	<30
Vibration times (times / minutes)	1500
Packing Dimension(L x W x H)	1040 x 1040 x 1250mm

# WLDH1000-4000 Powder Mixer Ribbon Mixer



Ribbon Blenders consist of a U-shaped horizontal trough, transmission parts and ribbon agitating blades which usually have double or triple layers with outside screw gathering the material from sides to center and inside screw transmitting the material from center to sides to form convection mix and a specially fabricated ribbon agitator.

The outer ribbon moves materials in one direction and the inner ribbon moves the materials in the opposite direction. The ribbons rotate at approx. 300 fpm moves materials both radially and laterally to insure thorough blends in short cycle times.

Ribbon blenders are commonly used in nutraceutical, chemical, food and related industries. It is excellent for mixing both wet and dry products.

## Features

- The machine is fully integrated and flexible.
- The stainless steel vessel is non- corrosive and allows dense liquids to turn freely and mix thoroughly without fading.
- Materials are poured manually.
- Operator- friendly.

## Technical Parameters

Model	Total Volume(L)	Load Coefficient	Power(KW)	Dimensions(mm)	Weight (kg)
WLDH-100	100	0.4-0.8	3	1190x740x770	330
WLDH-300	300	0.4-0.8	4	2030x630x980	720
WLDH-500	500	0.4-0.8	7.5	2320x730x1130	980
WLDH-1000	1000	0.4-0.8	11	2800x920x1320	1700
WLDH-1500	1500	0.4-0.8	11	3180x1020x1550	1800
WLDH-2000	2000	0.4-0.8	15	3310x1120x1640	2100
WLDH-3000	3000	0.4-0.8	18.5	3750x12290x1820	3000
WLDH-4000	4000	0.4-0.8	22	4220x1400x1990	3980
WLDH-5000	5000	0.4-0.8	22	4220x1500x2100	4620
WLDH-6000	6000	0.4-0.8	30	4700x1610x2260	6180
WLDH-8000	8000	0.4-0.8	37	4420x2150x2470	8200
WLDH-10000	10000	0.4-0.8	45	5520x2960x2720	8920



# SF-D Automatic Continuous Mill Herb Grinder



FZ Series Fritz/Cone Mill are widely used in pharmaceutical, food, and fine chemical processing industries. It is completely made of high quality stainless steel and built strictly conformed to the current cGMP standard. It is one of the most necessary solid dosage processing equipment in re-sizing the granules, re-granulating unqualified tablets or retrieve powder from unqualified capsules.

The material to be processed enters into the feed inlet of grinding and granulating machine, which drops into the conical sieve chamber. The rotary knife rotates a whirling action to the material, and place the granules to the sieve mesh surface by centrifugal force. The granules are grinded into particles by the shearing action produced by the rotary knife, the sieve mesh, and

discharged through the sieve apertures. The size of particles can be adjusted by the sieve meshes as shown below.

## Features

- All you need is a change of the granulating screen. This can help you get a cost-cutting as well as a cost-effective solution to your size reduction needs.
- Conical screen mill or cone milling is the most efficient and beneficial method for size reduction in powder processing industries.

## Technical Parameters

Model	FZ-150	FZ-300	FZ-450	FZ-700	FZ-700
Capacity	15-150kg/hr	30-300kg/hr	45-450kg/hr	70-700kg/hr	100-1000kg/hr
Granularity	6-80mesh	6-80mesh	6-80mesh	6-80mesh	6-80mesh
Temp. Rise (C)	<30	<30	<30	<30	<30
Range of Speed	300~3600rpm	300~3600rpm	300~3600rpm	300~3600rpm	300~3600rpm
Power	1.5kw	1.5kw	2.2kw	3.0kw	5.5kw
Dimension (mm)	720*445*1345	810*445*1345	920*445*1430	1000*500*1530	1100*600*1875
Height of discharge hopper	650mm	650mm	690mm	690mm	700mm



# WFJ-15 Superfine Grinder



Superfine grinder WFJ series is equipment which achieve superfine grinding of dry materials through air separation, heavy pressure grinding and shearing.

The material in the hopper passes through the auger conveyer and enters the grinding chamber. Then, As the blades rotate at high speed, the material is sheared and crushed. After that, the material is transported into the cyclone separator and bag-type dust collector by the wind force resulting from negative pressure.

## Features

- This machine consists of three parts: main machine, cyclone separator and pulse dust collector. It has characteristics of air sorting, no sifter, no sieve mesh, even particle size, etc. The production process is continuous.
- It can crush all kinds of heat sensitive materials without heating up the machine.
- Its overall performance has reached the international advanced level. It is widely used in pharmaceutical, chemical, food and other industries.



## Technical Parameters

Description	Parameters
<i>Fan motor</i>	4 kW
<i>Feeding motor</i>	0.55 kW
<i>Material discharging motor</i>	0.75 kW
<i>Overall dimension</i>	4,000*1,200*2,700 mm
<i>Fineness of finished product</i>	80~320
<i>Production capacity</i>	40~200 kg/h



# SF Automatic Continuous Mill Herb Grinder



SF Serie Fine Grinders are designed to grind dry, free-flowing material as fine as 120 mesh with very tight distribution of particle size. The highly efficient design allows for ease of access to all internals and is well suited for heat sensitive materials such as resins and sugar.

The feed material is metered into the center of the mill, where it is impacted by the rotor. The feed material is then thrown outward where it impacts with other particles aiding in the reduction process. After initial impact, particles are projected across the screen and are sheared between the blades of the rotor and the sizing screen or jaws. This action continues until the particles are properly sized and are discharged through the bottom of the mill.

## Features

- Final product size 10 – 120 mesh
- Replaceable grinding blades
- Sanitary construction available
- Precise control of finished particle size and distribution

## Technical Parameters

Model	SF130	SF180	SF250	SF320	SF40B
<i>Rotary Speed</i>	7000r/min	4000r/min	4000r/min	4500r/min	3400r/min
<i>Screen aperture</i>	0.4mm-3.0mm	0.4mm-3.0mm	0.4mm-3.0mm	0.4mm-3.0mm	0.4mm-3.0mm
<i>Capacity</i>	2 ~ 5kg/h	10 ~ 20kg/h	50 ~ 250kg/h	80 ~ 300kg/h	160 ~ 800kg/h
<i>Material Size</i>	5*5*5mm	8*8*8mm	10*10*10mm	10*10*10mm	12*12*12mm
<i>Power</i>	1.1kw	2.2kw	4.0kw	7.5kw	11kw
<i>Dimensions(mm)</i>	420*350*880	420*600*1000	860*500*1360	880*520*1450	800*900*1400







✉ [info@capsulcn.com](mailto:info@capsulcn.com)

☎ 0086-577-65155520 0086-15967727111

📍 No.51 Kaifa 1<sup>st</sup> Rd, Ruian, Zhejiang, China 325200

🌐 [www.capsulcn.com](http://www.capsulcn.com) [www.ipharmachine.com](http://www.ipharmachine.com) [www.huadapharma.com](http://www.huadapharma.com)